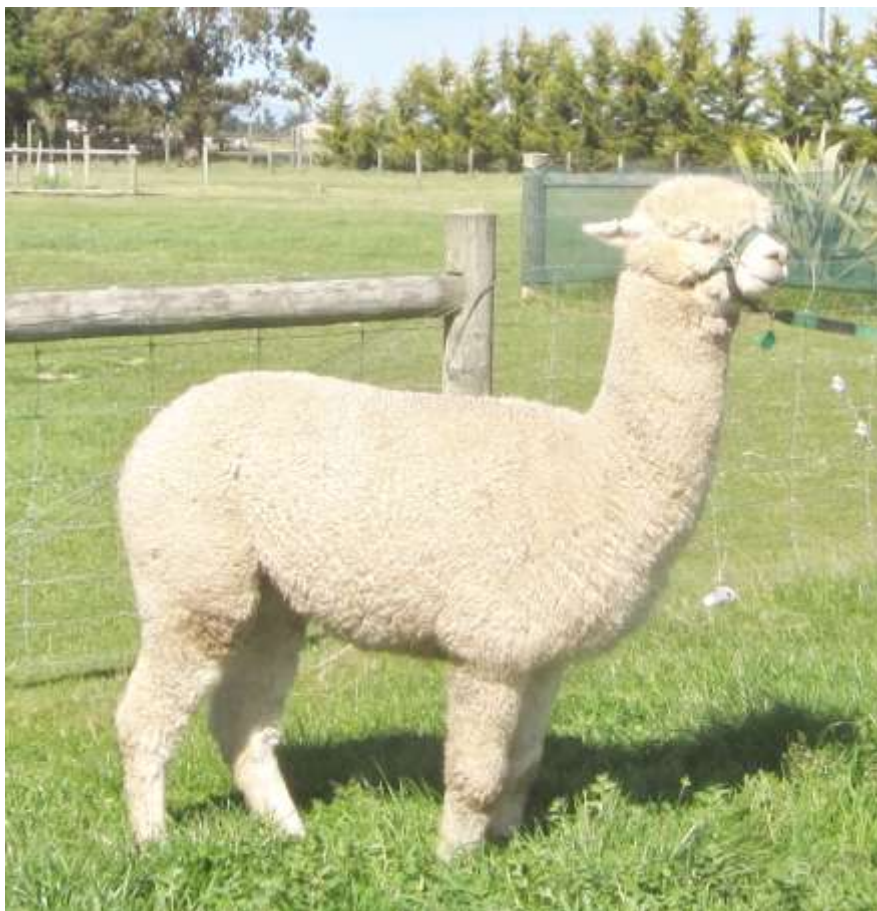


Aquaviva Alpacas

Aquaviva Phoebe

Aquaviva Herd Reduction Sale



Name	Aquaviva Phoebe				
Ear Tag	AQUM0005	Registry No.	1014705		
Birth Date	8-Dec-2016	Sex	Female	Phenotype	Huacaya
Colour	Solid White				
Sire	SAW Stoney Meadows Genesis - W (1008262)				
Dam	Aquaviva Madras - (S)DF (1014703)				
Description	<p>Phoebe will always be one of our favourite alpacas. She was born prematurely and, as with any animal who has been closely worked with, we formed a very special bond. Phoebe went from strength to strength and now is a lovely, healthy and gentle female alpaca. She is halter trained and very friendly.</p> <p>Phoebe's fleece is fine and quite dense, very light fawn. Phoebe has very interesting genetics, with Homestead Farm Apollo on her sire's side and ILR Alpine Fiber Brutus and Forestglen Ramses on her dam's side. We would love to see her have an opportunity to contribute to someone's breeding programme.</p>				
Fibre	First fleece (December 2017): 16.5mic, SD 3.7, CV 22.3, CF 100%, 112mm staple (13 months), CRV 64.2				
Current Mating	Phoebe is now ready to be mated.				

Aquaviva Phoebe



Phoebe at Southern Region
Colourbration September 2018.

Young Phoebe in our kitchen. Phoebe was born prematurely and (like all premature babies) initially had to be kept in the even temperature of 20 degrees C. During the day was with her mum Madras but for the night she was quite happy to settle indoors.



Aquaviva Phoebe

Family Tree

Sire

Sire Registry No.: 1008262 SAW Stoney Meadows Genesis - W

Dam

Dam Registry No.: 1014703 Aquaviva Madras - (S)DF

1001020 Aquaviva Trajan - (S)DF

57164 Eringa Park Aroma - (S)DF

62136 Forest Glen Forestglen Ramses - W

107178 Aquaviva Aspiring Misty - (S)W

84284 Aspiring Marion - LF